



TOMOTETSU KOGYO



TOMOTETSU
友鉄工業株式会社





TOMOTETSU
SINCE 1959

Production item

TOMOTETSU KOGYO



Automotive press mold



Die casting material



Manhole Cover



Mechanical casting



Landscape casting

鋳物



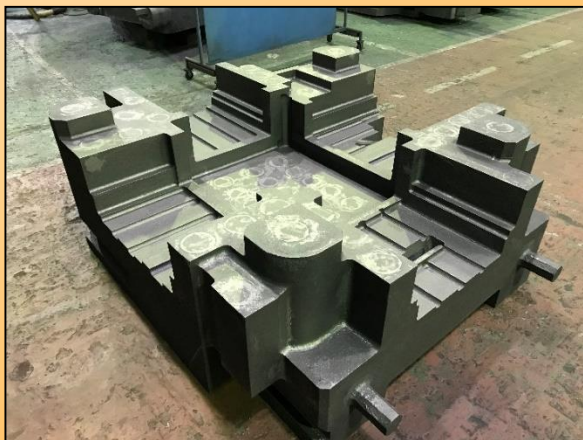
TOMOTETSU KOGYO

[illegible]

SINCE 1959



Automotive press mold



Die casting material

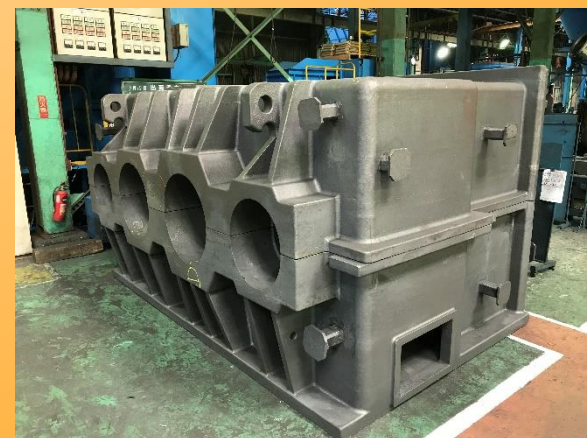
**友鉄
鑄物**



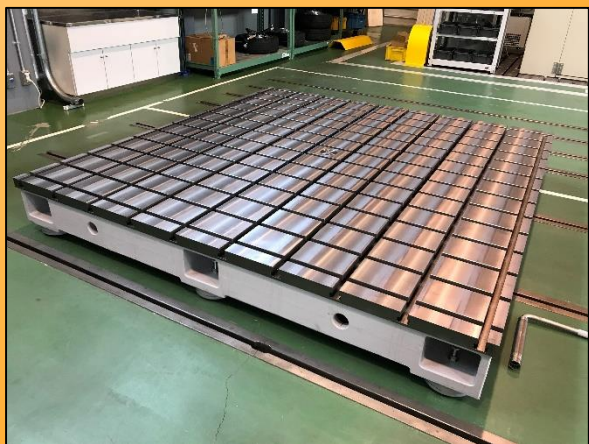
TOMOTETSU KOGYO

[illegible]

SINCE 1959



Mechanical casting



Surface Plate

**友鉄
鑄物**

友鉄
鑄物

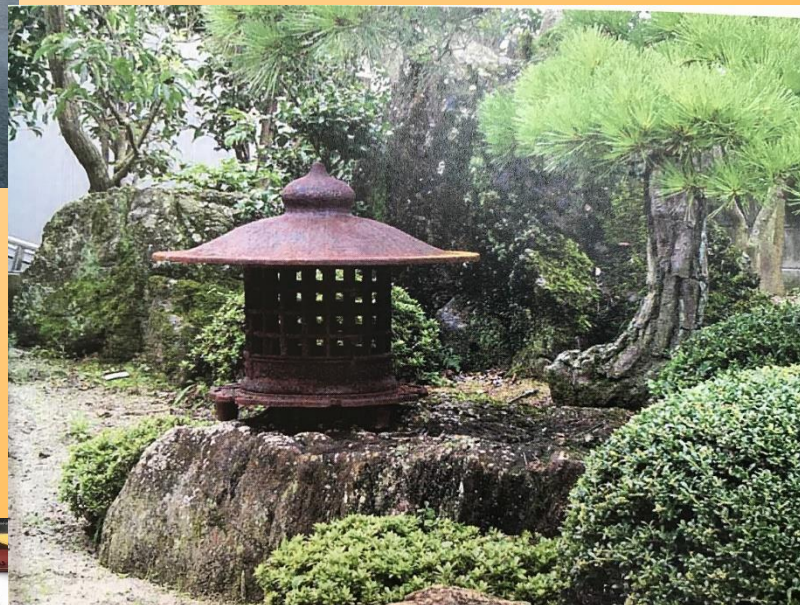


TOMOTETSU
SINCE 1959

Production item

TOMOTETSU KOGYO

Landscape casting



友鉄
鑄物



TOMOTETSU
SINCE 1959

Production item

Manhole Cover

TOMOTETSU KOGYO





TOMOTETSU
SINCE 1959

Company Profile

TOMOTETSU KOGYO

proceeds: 2,680 million yen (May 2018)
Number of employees: 96 people (As of January 2019)



Head office: Imuro Asakita-Ku Hiroshima
Site area: 14,368m²
Foundry



Kabe Factory : Kameyama Asakita-ku Hiroshima
Site area: 7,391 m²
Model production
Manhole Cover Machining Painting Shipment

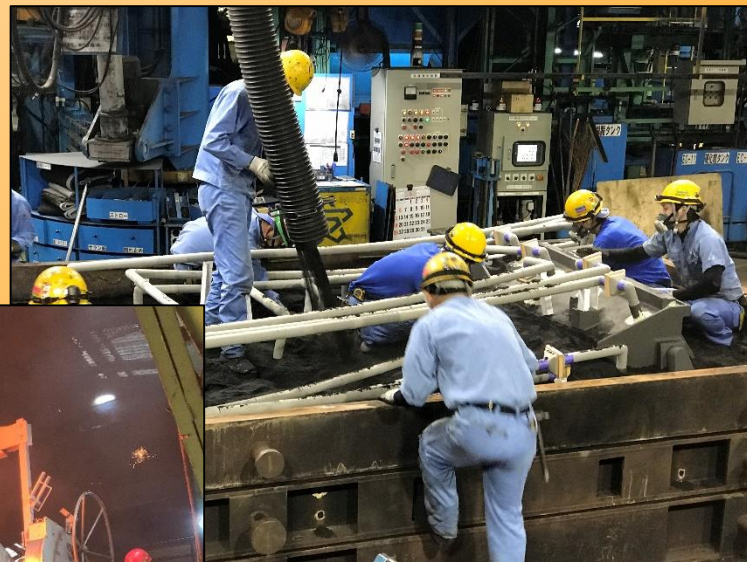


[illegible]



TOMOTETSU KOGYO

Production capacity: 900t/month



**友鉄
鑄物**

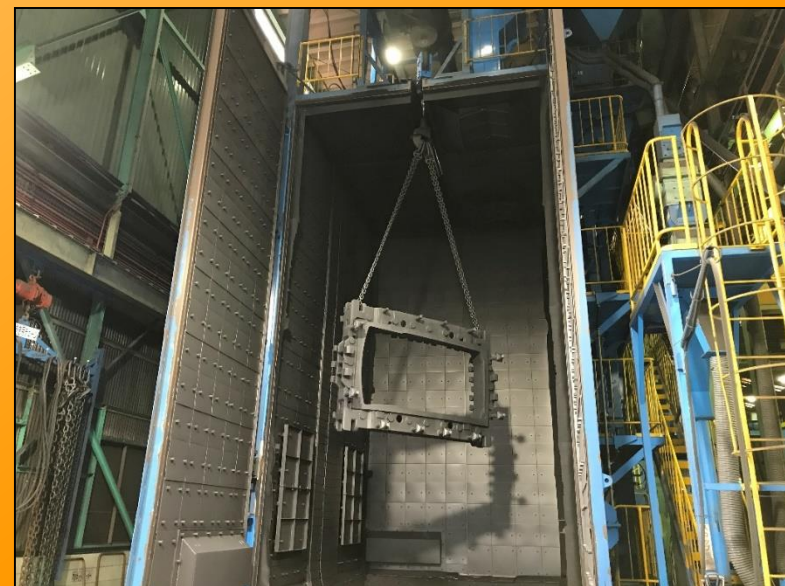


TOMOTETSU
SINCE 1959

Main equipment

TOMOTETSU KOGYO

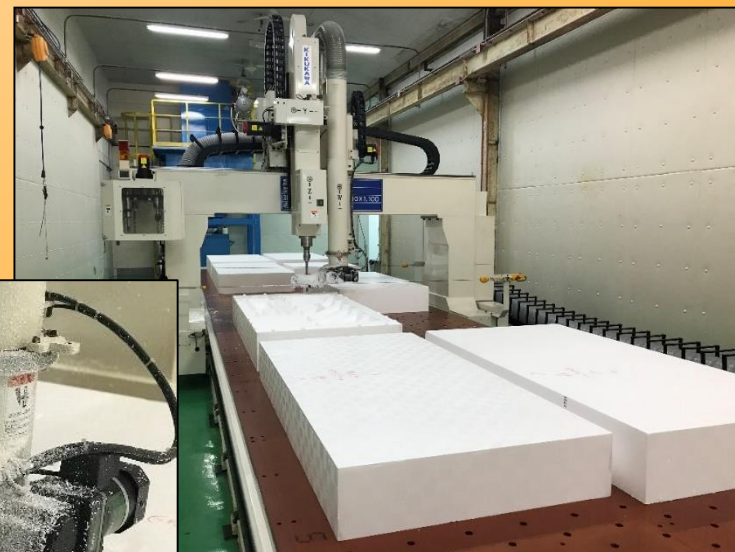
- Induction furnace 5t × 4
- mixer 15t/30t × 2
10t × 2
- Shake-out 20t × 1
15t × 1
5t × 1
- Sand control 20t × 1
15t 1
- Shot blasting 15t × 1
10t × 1
2. 5t × 2





CAD machine × 8

CAM machine × 2



NC Processing machine

$(16m) \times 3, (12m) \times 1$

3D laser measuring instrument

× 1

**友鉄
鑄物**



TOMOTETSU
SINCE 1959

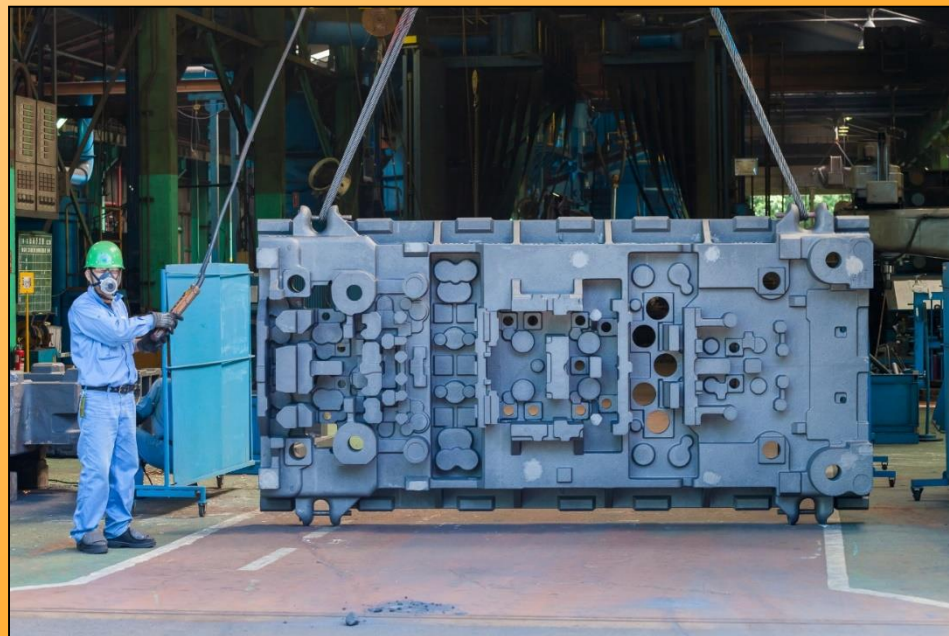
Corresponding size

TOMOTETSU KOGYO

imonoiiimonoiiimonoimonoiiimonoiiimonoimonoiiimonoiiimonoimonoiiimonoiiimonoiiimonoimonoiiimonoimonoiiimonoiiimono

Maximum product weight (Single item) : 15,000kg

Maximum size : 4,500 × 2,400 × 1,000



**友鉄
鑄物**



TOMOTETSU
SINCE 1959

Casting process

TOMOTETSU KOGYO

**Full mold process
(Automotive press mold)**



**Styrofoam die cutting process
(Die casting material)**

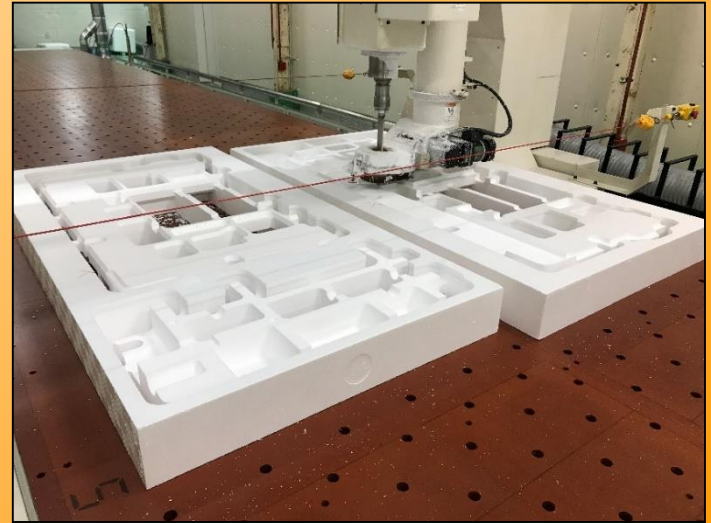


**Wooden pattern process
(Manhole Cover)**





TOMOTETSU KOGYO





TOMOTETSU
SINCE 1959

Process

TOMOTETSU KOGYO

Coating



Molding





TOMOTETSU
SINCE 1959

Process

TOMOTETSU KOGYO

Melting



Tapping



Pouring



友鉄
鑄物



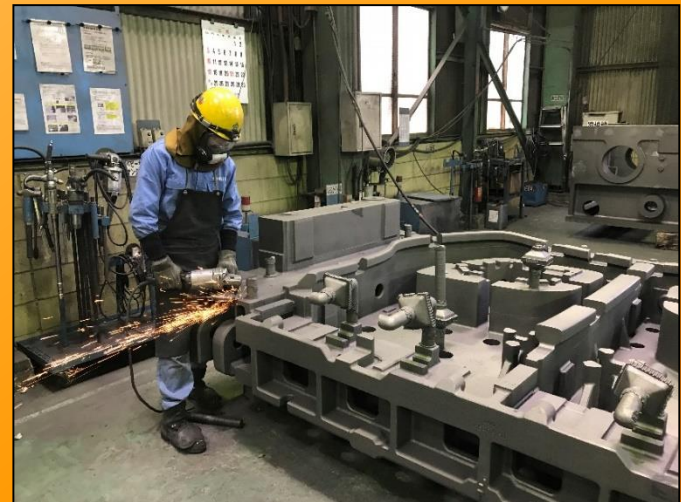
TOMOTETSU KOGYO

[illegible]

Shake out



Finishing



友鉄
鑄物



TOMOTETSU KOGYO

[illegible]

SINCE 1959

友鉄
鑄物



TOMOTETSU
SINCE 1959

Quality assurance

TOMOTETSU KOGYO

- Model 3D measuring instrument
- Water flow analysis
- Mechanical testing
- PT (penetration test)
- UT (ultrasonic testing)



友鉄
鑄物



TOMOTETSU
SINCE 1959

imonoiiimonoiiimonoimonoiiimonoiiimonoimonoiiimonoiiimonoimonoiiimonoimonoiiimonoiiimonoimonoiiimonoimonoiiimonoimonoiiimono

Event

TOMOTETSU KOGYO



Marathon



Cherry-blossom viewing



Sightseeing



Bowling competition



Company trip



Year-end party

**友鉄
鑄物**



TOMOTETSU
SINCE 1959

imonoiiimonoiiimonoimonoiiimonoimonoiiimonoimonoiiimonoimonoiiimonoimonoiiimonoiiimonoimonoiiimonoimonoiiimonoiiimono

Event

TOMOTETSU KOGYO



Ski Club Tour



Watching baseball match



Mount Fuji climbing



Baseball club activity



**Participate in Marathon race
in MAZDA**

友鉄
鑄物